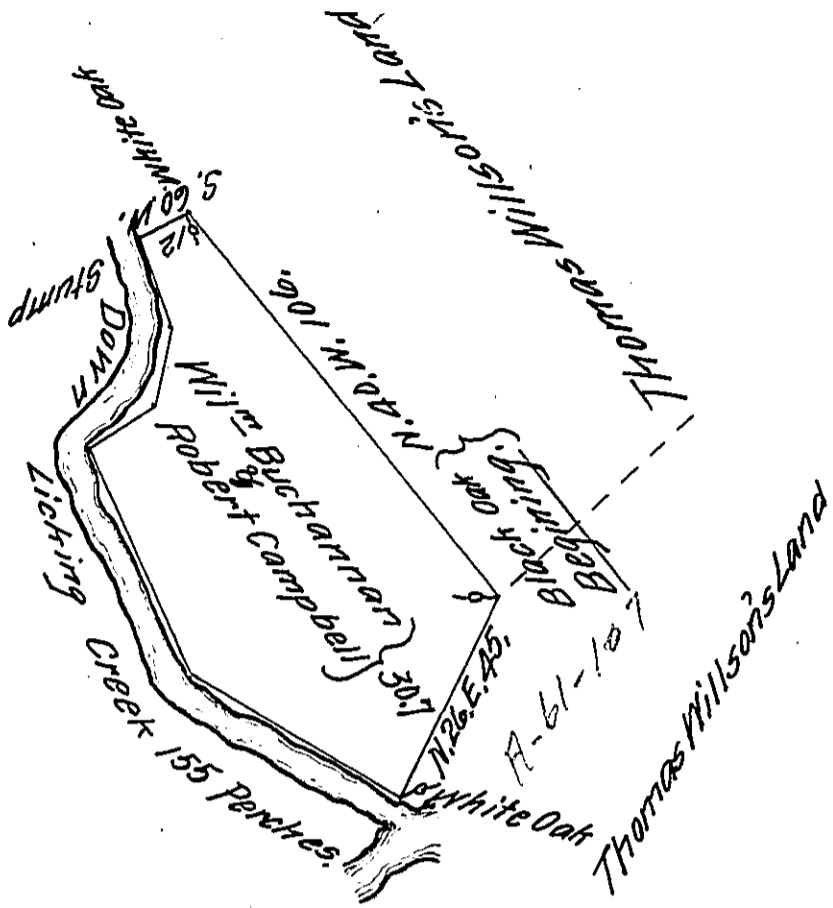


Courses & Distances
Down Licking Creek

- S. 21 . E. 20 .
- S. 11 1/2 . W. 15 .
- S. 52 . W. 16 .
- S. 25 . E. 52 .
- S. 61 . E. 52 .
- ~ 155



The Draught of a Tract of Land called 'The Bone of Contention' ~~situate~~ situate on the north side of Licking Creek in the County of Cumberland Contain- ing thirty acres 7 perches with Allowance Propor- tionate to six acres p Cent: for Roads, Survey'd or cut off the 15th. of April Anno Dom: 1767. From a survey made and returned for Thomas Willson. in order to satisfy a warrant from the Honble the Proprietaries to William Buchannan and Robert Campbell dated at Philad^a the 17th. day of March Anno Dom: 1755. Agreable to the Determination of the Board of Property of the 30th. of March Anno Dom: 1767- which vid: Campble V. Willson —

To John Lukens Esq. S.G. of Pennsylvania

P. Wm Maclay D.S.

Not this Tract Pat^d to Tho^s Willson in June 1787 see a Dft. Pat^d into the Secretary's office 13th April 1774.

IN TESTIMONY that the above is a copy of the original remaining on file in the Department of Internal Affairs of Pennsylvania, made conformably to an Act of Assembly approved the 16th day of February, 1833, I have hereunto set my Hand and caused the Seal of said Department to be affixed at Harrisburg, this Second day of February 1912.

Henry Horvath
Secretary of Internal Affairs.